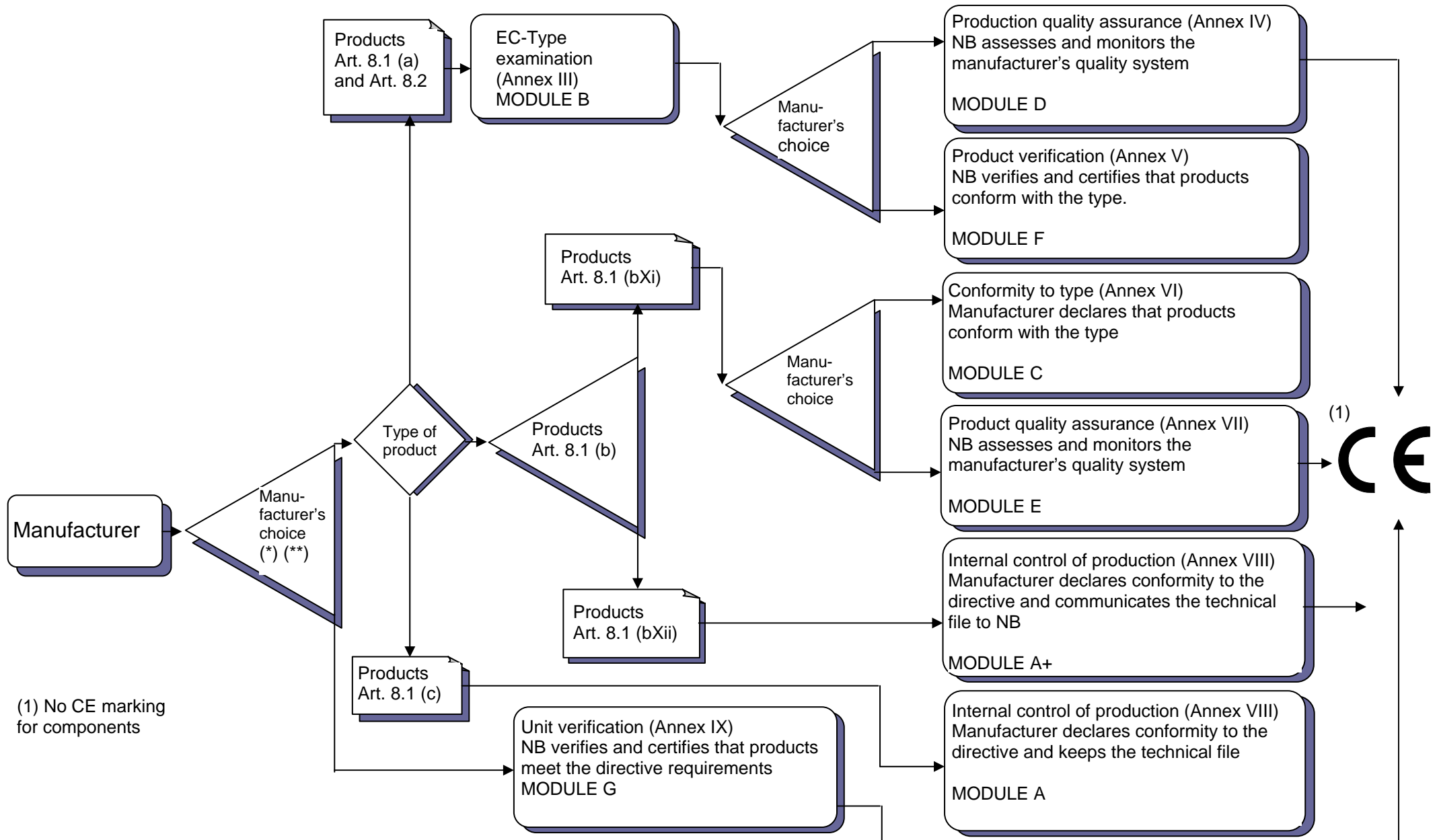


13. Flow chart for the conformity assessment procedures provided for in Directive 94/9/EC on equipment and protective systems intended for use in potential explosive atmospheres



(1) No CE marking for components

(*) All referred procedures shall be applied in respect of components, with the exception of the affixing of the CE marking (Art. 8.3).

(**) Manufacturer may follow the internal control of production (Annex VIII) procedure with regard to the safety aspects referred to in point 1.2.7 of Annex II to the Directive.